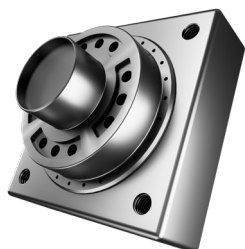


# GREAT IN PRECISION

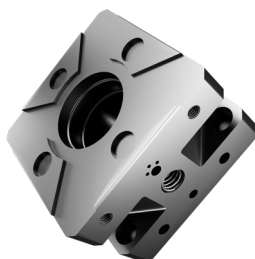


## MACHINELIST OVERVIEW



### Grinding

8,000 x 3,000 x 1,500 mm / Ø 2,000 mm



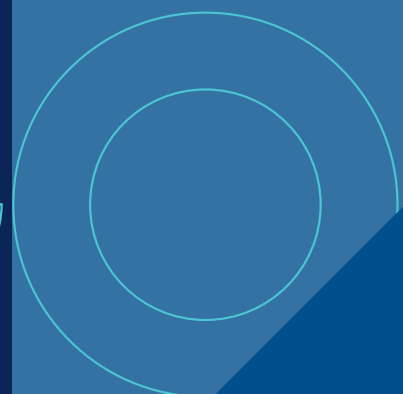
### Milling

16,000 x 4,600 x 2,850 mm



### Measuring

6,000 x 3,000 x 1,600 mm



DE ROOY

Slijpcentrum  
Precision



[www.rooy.nl](http://www.rooy.nl)

# WE ARE DE ROOY

As an ambitious family business since 1939, we proudly strive for the highest standards every day. As experts in grinding, milling, and measuring, we specialize in the precise machining of large components for high-tech mechanical engineering. With passion and craftsmanship, our dedicated team works closely together to deliver exceptional results for clients across diverse industries. We are uniquely positioned to combine the machining of large dimensions with unmatched precision. This is made possible by our state-of-the-art machinery, skilled professionals, and unwavering commitment to excellence. At DE ROOY, we take pride in our work, engage fully with our clients, and apply our expertise to achieve remarkable outcomes.

## EXPERTS IN PRECISION

DE ROOY is your precision expert in grinding, milling, and measuring large metal components for the high-tech manufacturing industry. Operating from the Netherlands, strategically located in the heart of Europe, we efficiently serve a wide range of (inter)national clients. As specialists in surface grinding, cylindrical grinding, milling, and precision measurement of large metal components, we offer a unique combination of services. Our fully climate-controlled production facility ensures the highest achievable accuracy, meeting the most stringent demands of high-tech mechanical engineering.

With over 85 years of experience, we have earned a reputation as a trusted and efficient partner. Our team of dedicated experts ensures we can rapidly allocate capacity to your project, no matter its size or complexity. We proudly serve industries including offshore, semiconductor, and food processing, delivering excellence in every detail.

In addition, DE ROOY is ISO 9001 and ISO 14001 certified, reflecting our commitment to quality, precision, and sustainability. At DE ROOY, we strive for perfection every single day.



30+

CNC machines

130+

Colleagues

4074

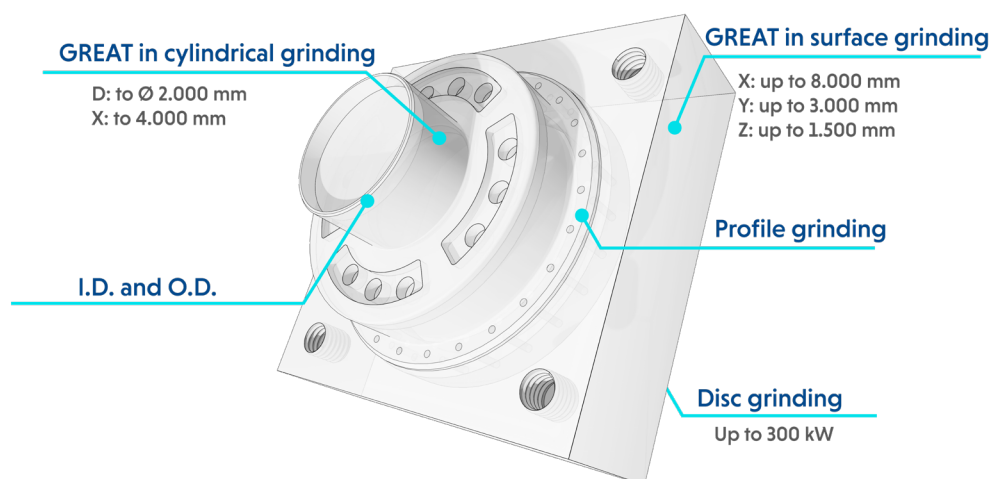
Solar panels

20°

Production temperature

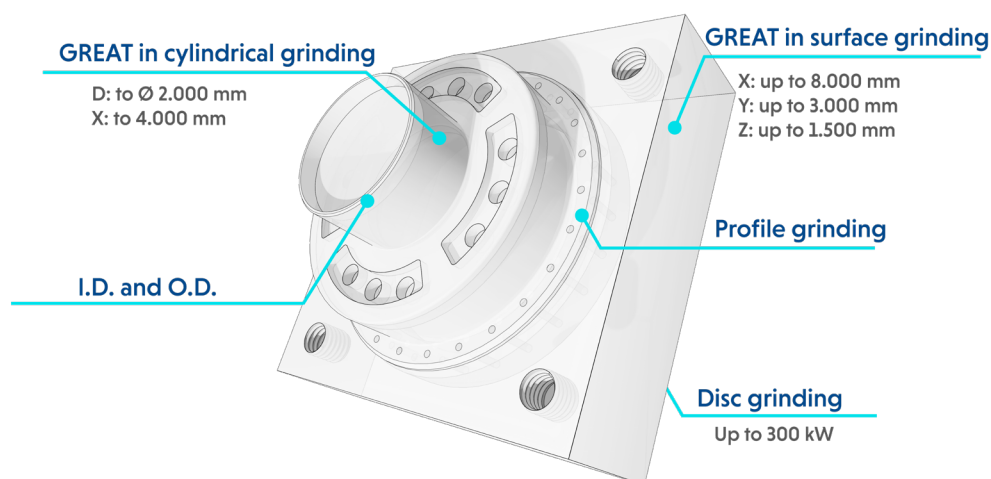


# MACHINELIST GRINDING



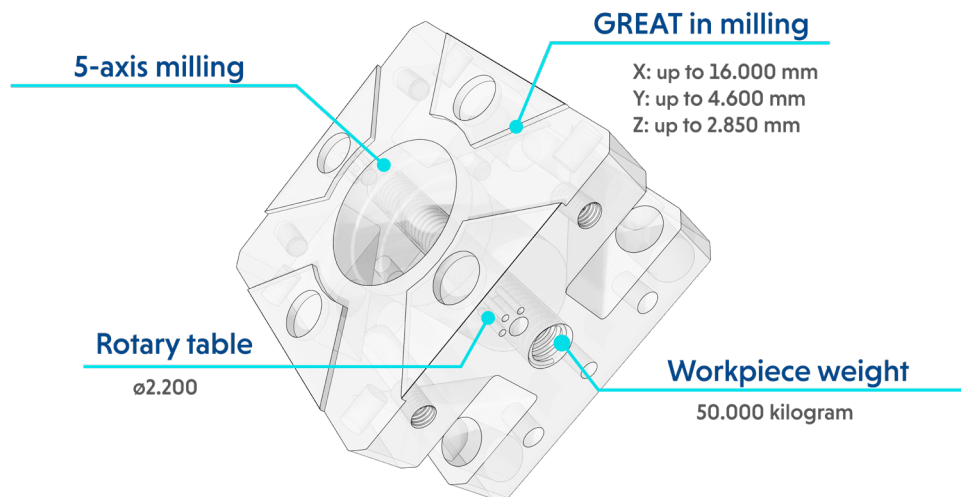
| Surface grinding             | Machine         | Machine type              | Capacity (mm)      | Additional information                         |
|------------------------------|-----------------|---------------------------|--------------------|--|
| Surface and Profile grinding | Danobat         | SGD 80/30/15 CNC          | 8000 x 3000 x 1500 | Max. 30,000 kg / Incl. universal grinding head |
| Surface and Profile grinding | Waldrich Coburg | 30-15SPS CNC              | 7000 x 1750 x 1500 | Incl. universal grinding head                  |
| Surface and Profile grinding | WMW-Heckert     | Aschersleben              | 3000 x 1500 x 1000 | Incl. uni-spindle                              |
| Surface and Profile grinding | Rosa            | Silver 60.9 CNC           | 6250 x 900 x 700   |  |
| Surface and Profile grinding | Danobat         | RTM 6000 CNC              | 6000 x 750 x 650   | Concave and Convex                             |
| Surface and Profile grinding | Danobat         | RTL 2000 CNC              | 2000 x 750 x 650   | Concave and Convex                             |
| Surface and Profile grinding | Okamoto         | ACC358 CNC                | 3500 x 1000 x 600  |  |
| Surface and Profile grinding | Okamoto         | ACC258 CNC                | 2500 x 800 x 600   |  |
| Surface and Profile grinding | Okamoto         | ACC208 CNC                | 2000 x 1000 x 600  |  |
| Surface and Profile grinding | Blohm           | Planomat 612 CNC          | 1200 x 600 x 550   |  |
| Surface and Profile grinding | Proth           | PSGP-1022AHR              | 2200 x 1000 x 500  |  |
| Surface and Profile grinding | Okamoto         | 125 EX CNC                | 1200 x 500 x 500   |  |
| Surface and Profile grinding | Okamoto         | PRG8 CNC                  | Ø 900 x 250        | Rotary table machine                           |
| Surface and Profile grinding | Jung            | JF525 CNC                 | 500 x 200 x 300    | 3 machines                                     |
| Disc grinding                | Reform          | AR60 type 19 CNC (220 kW) | 6000 x 1350 x 550  |  |
| Disc grinding                | Reform          | AR41 type 19 CNC (300 kW) | 4100 x 1350 x 550  |  |
| Disc grinding                | Camut           | V2-44C (80 kW)            | 4000 x 850 x 750   |  |
| Disc grinding                | Göckel          | G50   GB65                | 5500 x 150 x 150   | 3 pieces / Tilttable magnet                    |
| Pressing                     | Sahinler        | Portalpress DK-S/400 ton  | 4000 x 2500 x 600  | 400 tons                                       |

# MACHINELIST GRINDING



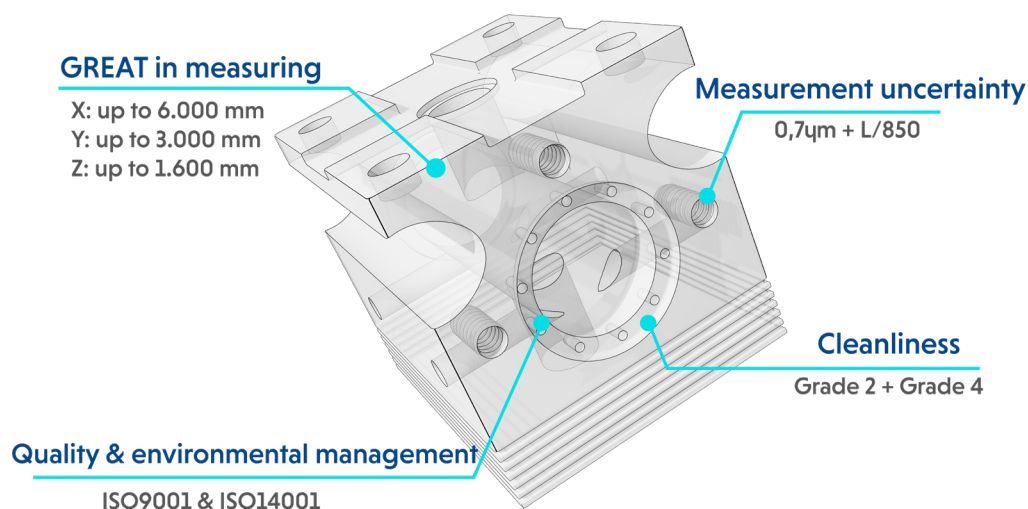
| Cylindrical grinding | Machine       | Machine type     | Capacity (mm) | Additional information   |
|----------------------|---------------|------------------|---------------|--|
| Vertical grinding    | Kehren        | Ri 12-4          | Ø 1500 x 950  | Surface grinding<br>In- and externally cylindrical grinding<br>Coördinates grinding                    |
| Vertical grinding    | Kehren        | Ri 8-4           | Ø 1200 x 700  | Surface grinding<br>In- and externally cylindrical grinding<br>Coördinates grinding and<br>hardturning |
| Vertical grinding    | Berthiez      | VGM-1600 CNC     | Ø 2000 x 1300 | In- and externally cylindrical grinding  |
| Vertical grinding    | DMG Mori      | Taiyo Koki VM55  | Ø 550 x 450   | Surface grinding<br>In- and externally cylindrical grinding  |
| Cylindrical grinding | Danobat       | G91-S CNC        | Ø 1000 x 4000 | Max. 5000 kg   |
| Cylindrical grinding | AMC-Schou     | R3000            | Ø 670 x 3000  |  |
| Cylindrical grinding | WMW-Heckert   | SA6 x 1500       | Ø 550 x 1500  |  |
| Cylindrical grinding | Fermat        | BUB E50/2000 CNC | Ø 500 x 2000  |  |
| Cylindrical grinding | Kellenberger  | 1500-U/R         | Ø 350 x 1500  |  |
| Cylindrical grinding | Studer        | S40 CNC          | Ø 350 x 1000  | With C-As  |
| Cylindrical grinding | Studer        | S30 Leanpro CNC  | Ø 350 x 1000  | With B-As  |
| Cylindrical grinding | Göbel         |                  | Ø 800 x 300   | Special cylindrical knifegrinders  |
| Cylindrical grinding | Göckel        | R5   R6          |               | Special cylindrical knifegrinders  |
| Centerless grinding  | Cincinatti    | No.2             | Ø 2 - Ø 75    |  |
| Centerless grinding  | Herminghausen | SRII             | Ø 1 - Ø 50    |  |

# MACHINELIST MILLING



| Milling | Machine  | Machine type  | Capacity (mm)       | ATC        | Additional information   |
|---------|----------|---------------|---------------------|------------|--|
| Milling | PAMA     | Vertiram 2000 | 14000 x 4650 x 2850 | 384 HSK100 | 5-axis, simultaneous, four interchangeable heads                   |
| Milling | PAMA     | Vertiram 2000 | 14000 x 4650 x 2850 | 180 HSK100 | 5-axis, simultaneous, four interchangeable heads                   |
| Milling | Unisign  | Uniport 6000  | 16000 x 4000 x 1300 | 121 SK50   | 5-axis, indexed per 2,5 degrees (max. 50.000 kg)                   |
| Milling | Unisign  | Uniport 6000  | 8000 x 3500 x 1300  | 200 HSK100 | 5-axis, indexed per 2,5 degrees                                    |
| Milling | Unisign  | Uniport 6000  | 8000 x 3500 x 1300  | 112 SK50   | 5-axis, indexed per 2,5 degrees                                    |
| Milling | Unisign  | Uniport 6000  | 8000 x 3500 x 1550  | 112 HSK100 | 5-axis, indexed per 2,5 degrees two interchangeable heads          |
| Milling | Unisign  | Uniport 6000  | 8000 x 2500 x 1300  | 99 SK50    | 5-axis, indexed per 2,5 degrees                                    |
| Milling | Unisign  | Uniport 4000  | 6000 x 1500 x 400   | 39 SK40    | 3-axis   |
| Milling | Matec    | 40-P          | 16000 x 3500 x 1500 | 100 SK50   | 5-axis, simultaneous   |
| Milling | Matec    | 50HVU         | 6000 x 1400 x 1800  | 172 HSK100 | 6-axis, simultaneous, rotary table Ø 2200 mm                       |
| Milling | Matec    | 40-HV         | 8000 x 1000 x 1100  | 152 SK50   | 4-axis, simultaneous   |
| Milling | Matec    | 30-HV         | 3000 x 800 x 700    | 36 SK40    | 5-axis, indexed per 1 degree, rotary table Ø 700 mm                |
| Milling | Matec    | 30-HV         | 3000 x 800 x 1000   | 216 SK40   | 4-axis, simultaneous   |
| Milling | Hedelius | T10-3.600     | 3600 x 1000 x 1000  | 192 HSK100 | 5-axis, simultaneous, indexed per 1 degree, rotary table Ø 1000 mm |
| Milling | Hartford | VMC 1270      | 1270 x 635 x 635    | 24 SK40    | 3-axis   |

# MACHINELIST MEASURING



| Measuring | Machine  | Machine type        | Capacity (mm)      | Additional information                     |
|-----------|----------|---------------------|--------------------|--|
| Measuring | Leitz    | PMM-G 60.30.16      | 6000 x 3000 x 1600 | Max. measurement uncertainty 2,8µm + L/400 |
| Measuring | Leitz    | PMM-C Ultra 24.16.7 | 2400 x 1600 x 700  | Max. measurement uncertainty 0,7µm + L/850 |
| Measuring | Mitutoyo | Crysta Apex 9206    | 2000 x 900 x 600   | Max. measurement uncertainty 1,9µm + L/300 |
| Measuring | Mitutoyo | Crysta Apex 574     | 700 x 500 x 400    | Max. measurement uncertainty 1,9µm + L/300 |

## Direct contact

Phone: +31 (0)40 281 34 59  
 Email: [info@rooy.nl](mailto:info@rooy.nl)



## Shipping address

Collseweg 19  
 5674 TR Nuenen  
 The Netherlands

## Visiting address

Collse Hoefdijk 16  
 5674 VK Nuenen  
 The Netherlands

**DE ROOY**

Slijpcentrum  
 Precision



[www.rooy.nl](http://www.rooy.nl)